

FLOURISH FURNITURE BANK



2022 Impact Report

Warehouse/Showroom
11971 Grandview Road
Suite A
Grandview, MO 64030

Mailing
P.O. Box 778
Grandview, MO 64030

816-946-8600

info@flourishfurniturebank.org

www.flourishfurnishings.org



Platinum
Transparency
2023

Candid.

“Thank you so much for all the furniture I got from Flourish. I really wanted to make my home comfortable and safe like my grandma’s house always was.”

These words from one of our guests remind me that we’re not just helping people have furniture on which to sit, sleep, and eat, but we are helping them to have the things that make their house a home—and we know that home is a place that should feel safe, warm, hospitable, and inviting to our friends and family.

The housing crisis in Kansas City continues to escalate, so being part of the solution is more important than ever. We know that one of the keys to successful housing is having furniture and housewares. After all, how can a person cook without pots and pans, or how can they even open their cans of food without a can opener. They can receive all those things at Flourish, allowing them to focus on their careers and families.

We have seen incredible growth in 2022, reflecting both the high demand and the deep commitment of our staff, volunteers, and donors to ensure that no person lives without adequate furnishings. We’ve added a day of service, hired a development coordinator, increased our number of both individual and corporate donors, and had several news stories about Flourish in 2022.

We expect that 2023 will be an incredible year for all of us at Flourish. We’re already on pace to serve our target of 1000 families this year with over 35,000 items, all while keeping over 300 tons of items from our landfills. We’re continuing to make a difference in Kansas City!

RICH SHOCKEY
Executive Director





Shantea, Guest, with Jill, Host, catching up after shopping for furnishings. Shantea is now happily moved into her new home!

TABLE OF CONTENTS



Need	1
Mission	2
Impact	3
Support	4
Homes	5
People	6
Reasons	7
Dignity	8
Partners	9
Agencies	10
Agency Feature	11
Agency List	12
Volunteers	13
Teams	14
Items	15
Financials	16

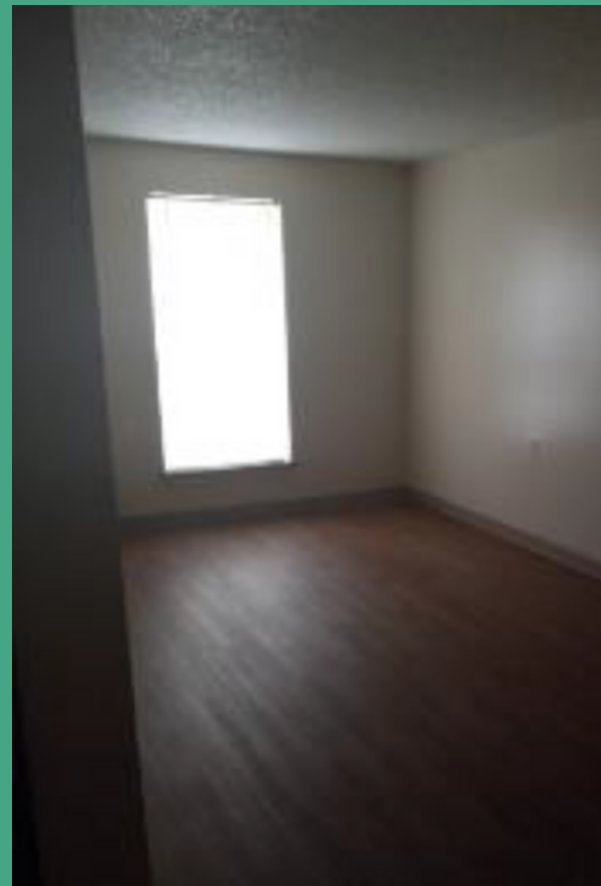
THE NEED

Skyrocketing rents and inflated living expenses leave more than 1,500 people unhoused in Kansas City on any given night. Although our city has a collaborative network of social service agencies, many families are still forced to choose between rent, food, healthcare, and other survival needs. With limited resources, hundreds of families are forced to live in empty apartments, without essentials like beds, dressers, cookware, or linens. An unfurnished space robs families of safety, comfort and dignity, detracting from their ability to overcome other struggles.

Housing stability is essential for the well-being of individuals and families. According to the American Public Square, Kansas City lacks nearly 20,000 units of affordable housing for low to moderate-income renters. This leaves many individuals and families with no choice but to live in overcrowded or unsafe conditions.

For many people, the cost of furniture can be a barrier to accessing housing. The U.S. Census Bureau reports that 15% of Kansas Citians have incomes below the federal poverty line. This creates a cycle of housing insecurity, as individuals without access to furniture struggle to maintain a stable home.

Most importantly, access to safe and functional furniture is essential for maintaining dignity. Without access to basic furniture, individuals and families are denied the ability to create a welcoming, comfortable living space that they can be proud of. By providing essential furniture items, we empower individuals and families to create a unique sense of home.



Many families are living in empty homes before shopping at Flourish Furniture Bank

OUR MISSION

Flourish Furniture Bank exists to collect and distribute free furnishings to families transitioning to stable housing. By partnering with more than 70 agencies providing case management, we bridge the gap between case management services and independent living. We provide beds, furniture, cookware, and more to families who have lost their homes or who can't afford furniture. At no cost to the families we serve, we lay permanent foundations for their homes moving forward.



The same home furnished with items chosen from Flourish Furniture Bank

Our process begins when a family or individual is enrolled in case management services. This could be through a social services agency, community organization, or other referral source. Their case manager refers them to the furniture bank once they have secured a place to live.

The shopping appointment is designed to prioritize the dignity and emotional needs of those we serve. During their time at Flourish, our guests take an active role in selecting items for their home. With our diverse inventory of donated furnishings, they can choose items that reflect their personal style and preferences in order to create a sense of ownership and pride in their new home.

We collaborate with families, donors, volunteers, and social service agencies to provide a meaningful and sustainable way for individuals and businesses to donate unwanted furniture and household items, while also ensuring that those in need have access to essential items and reducing the amount of waste that ends up in landfills.

IMPACT



HOMES

Last year, Flourish Furniture Bank furnished 881 homes in areas across all five counties of the Kansas City metro area. That doesn't mean just a couch, or a bed, or a few home items. We provided everything needed to make these houses feel like home: from the big essentials, like beds and kitchen tables, to the tiny details, like artwork and bathroom items.



PEOPLE

Having a furnished home is one of the most important factors in establishing long-term homes for people at risk of being unhoused. We directed furnishings to those transitioning to stable housing. Many of our guests were families, and 1,085 children are among the 2,244 household members living in now-furnished homes.



PARTNERS

We furnished homes for guests referred by 65 social service agencies in Kansas City. We fortified the efforts of service providers including schools, hospitals, shelters, transitional housing centers, addiction recovery programs, refugee resettlement agencies, and many others.



SUPPORT



365

VOLUNTEERS

Our operations were driven by 365 unique volunteers who showed up rain or shine to furnish homes. They ensured an environment of warmth and hospitality, that items were cleaned and repaired, and that we maintained a high standard of excellence in our service.



34,797

ITEMS

We collected and distributed 34,797 pieces of furniture and home goods. Guests chose from a wide array of options thanks to many individuals and businesses who donated items. Our well-organized showroom created the dignified environment of a furniture store.



650+

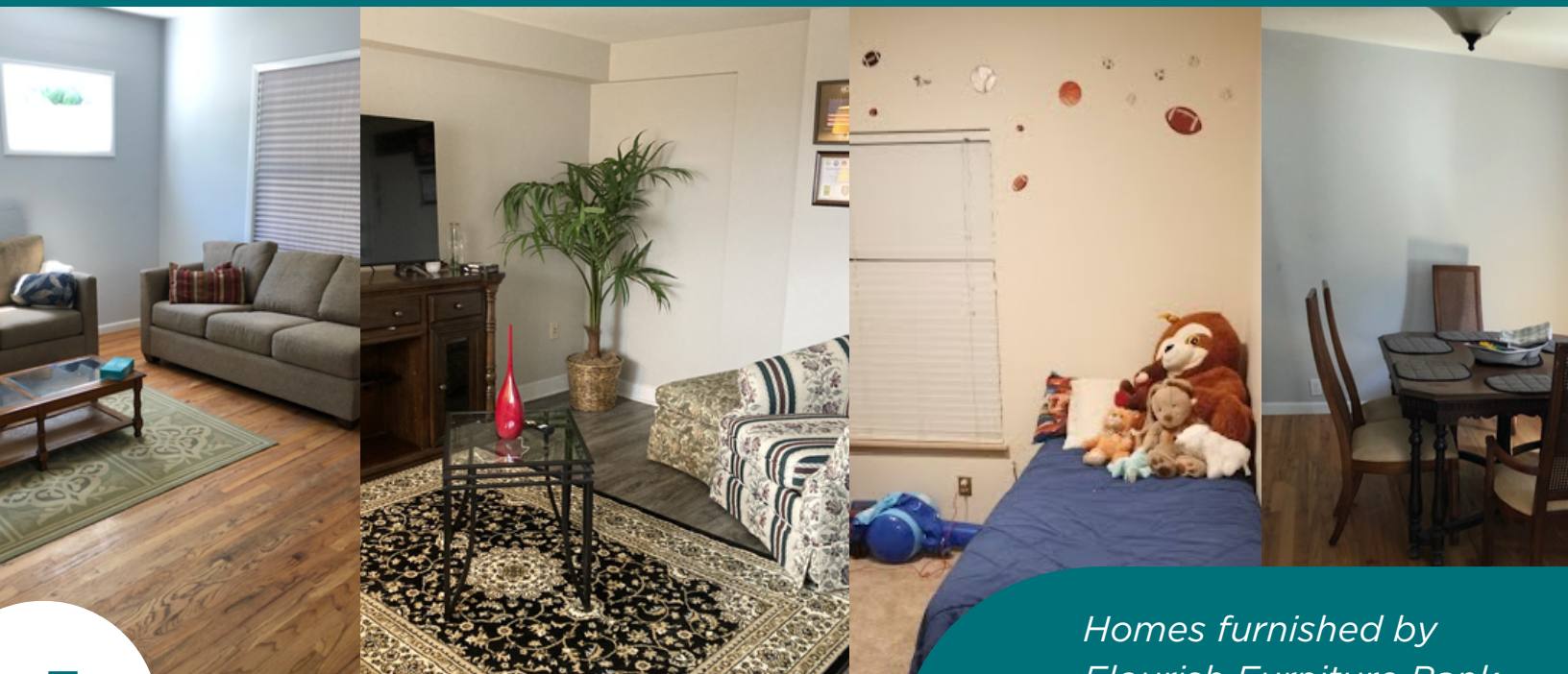
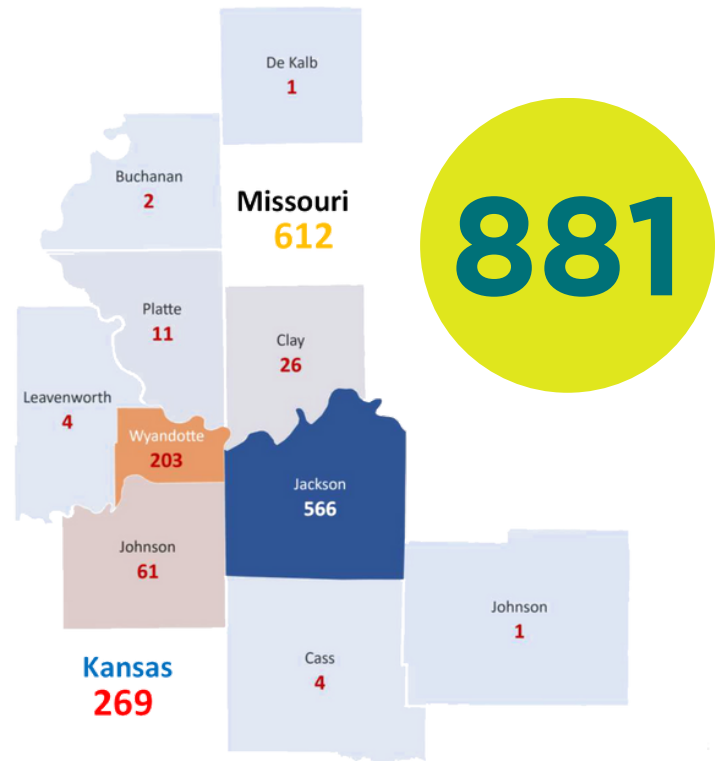
DONORS

Flourish Furniture Bank was supported entirely by donations from a community of 650+ donors. Monetary donations totaling \$492,000 fueled our operations, while 34,797 items donated by businesses and individuals valued a total of \$823,429.



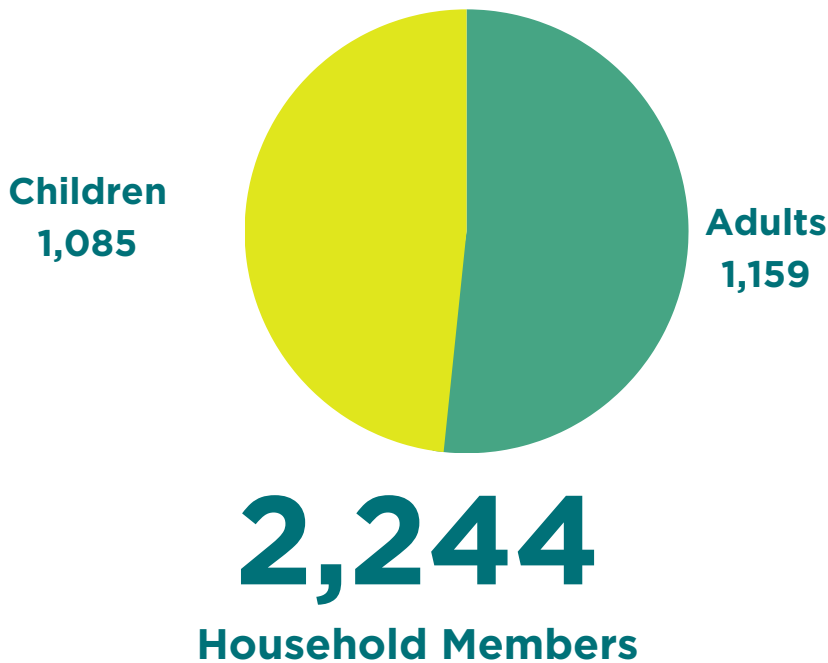
HOMES

Flourish Furniture Bank distributed free furniture and housewares to 881 homes across the Kansas City metro area. For those dealing with traumatic loss or emerging from chronic poverty, living in an empty home multiplies mental and physical hardship. We outfitted homes with big essentials like beds, couches, and dining room tables. Yet we also made sure to provide the little things that make a house a home: including dishes, artwork, mirrors, rugs, seasonal decor, and more. The resources we distributed provided an economic boost for recovering families while laying long-term foundations for healthy, happy homes.



Homes furnished by
Flourish Furniture Bank

PEOPLE



Flourish Furniture Bank furnished 881 homes, providing essential furniture to 2,244 individuals in our community. Of these individuals, 1,085 were children who now have a safe and comfortable place to call home.

Our efforts to provide quality furniture to individuals and families transitioning to stable housing helped break the cycle of poverty and housing insecurity for 881 families. A good night's sleep, made possible by a quality bed and mattress, improves overall health and well-being, allowing individuals to be more productive and focused. A furnished home offers a space for studying and learning, while a well-equipped kitchen provides the opportunity for healthy meals shared together.

Through our personalized approach, we empower guests to define their unique sense of home moving forward.



Children sleeping in beds from Flourish Furniture Bank

82% experienced houselessness

82% income at or below poverty level

100% enrolled in case management services

REASONS

22%

Loss of Home - 194 guests lost their home due to foreclosure or eviction, many of whom experienced houselessness for one or more months.

17%

Domestic Violence - 149 guests were forced to flee their homes due to domestic violence, often leaving behind their resources and belongings.

16%

Disability - 138 guests were referred due to disabilities that made home furnishings unobtainable, from financial to physical barriers.

14%

Mental Illness - 126 guests were affected by mental illness, and were establishing a new home as part of their ongoing treatment and support plan.

8%

Incarceration - 67 guests were re-entering independent living after having been incarcerated, with few resources to establish a new home.

6%

Job Loss - 52 guests lost their jobs, causing financial hardship and limiting their ability to furnish their home while providing basic living necessities.

DIGNITY

At Flourish Furniture Bank, we are committed to treating every individual with dignity and respect. We believe that the impact of furniture extends beyond the functional purposes it serves; it has the power to transform living spaces into welcoming homes and restore a sense of pride and self-worth. Access to safe and functional furniture is essential for creating a stable home environment, which in turn promotes physical, mental, and social well-being. Through collaboration across sectors, we empower our guests to make choices that align with their personal style and needs, building a community where everyone has access to the resources they need to live with dignity and thrive.



"The staff and volunteers were very helpful and respectful; they made me feel as if I was important and the needs for my home were priority as well. To be able to receive items to furnish our new home was truly a blessing. I'm very thankful and grateful for Flourish and their team."

- Flourish Guest, October 2022

PARTNERS

We partnered with more than 70 social service agencies, and received referrals from a total of 65 organizations. Our partners serve a diverse range of communities, from mental health centers to domestic violence shelters to refugee resettlement agencies. Our partner agencies provide wrap-around support, including housing, employment, health, and family services. As a centralized source for whole-home furnishings, we saved case managers time and money by providing everything needed to furnish homes on a larger scale. Working together allows our partners to put their valuable resources towards funding essential services and programs.

The screenshot below was taken from our monthly orientation for new referring case managers. We love getting to know our partners and learning about the work they do. We are so proud to be a part of the thriving social service community in Kansas City!



AGENCIES

(by referral volume)

- **Avenue of Life (92)**
Avenue of Life mobilizes the community to equip and empower low-income individuals and families.
- **Wyandot Center (88)**
Wyandot Center is the designated community mental health center serving Wyandotte County, Kansas.
- **reStart (55)**
reStart provides a continuum of housing services to all of Kansas City's homeless populations.
- **University Health (54)**
University Health is a community mental health center providing complete behavioral health services.
- **Rose Brooks Center (47)**
Rose Brooks Center is an emergency shelter offering safety to adults, children, and their pets.
- **Metro Lutheran Ministry (42)**
Metro Lutheran Ministry connects people with food, housing, health care, education, and more.
- **Journey to New Life (38)**
Journey to New Life restores opportunity to those re-entering society after incarceration.
- **Hillcrest Transitional Housing (29)**
Hillcrest offers transitional housing for homeless families, singles, and youth.
- **Jewish Family Services (28)**
JFS provides essential services for people facing challenges in everyday life or times of crisis.
- **Safehome (26)**
Safehome is a domestic violence shelter providing benefits to 8,000+ individuals each year.



AGENCY FEATURE



Lamar
Johnson
shopping at
Flourish

"The greatest resource that we can give [our clients] is Flourish Furniture Bank. Having a new home to move into after being in prison for years feels great but it can bring some worry with it. By referring them to Flourish and going with them to get furniture and other housing needs we are taking those worries away and making the process a beautiful thing."

Emily Dodgson

Journey To New Life

Journey to New Life

Kevin Strickland was only 18 years old when he was falsely accused of murder. Shortly after, he was convicted and began serving a life sentence for a crime he did not commit. After 42 years of life in prison, from 1979 to 2023, Kevin was exonerated, making his case the longest confirmed wrongful conviction case in Missouri.

Lamar Johnson faced a similar nightmare in 1995. It wasn't until February of 2023, 27 years later, that a judge exonerated Lamar, after declaring constitutional error, stating "there is clear and convincing evidence of Lamar Johnson's actual innocence."

Ricky Kidd was 21 when he, too, was wrongfully convicted and sentenced to life, spending over two decades, from 1997 to 2019, incarcerated.

Flourish Furniture Bank and Journey to New Life are two organizations that understand the deep importance of home and belonging. Through this partnership, Flourish has been able to help Ricky, Kevin, and Lamar on their road to stability as they face a future that may have seemed impossible just a short time ago. Through the collaboration of help through Ricky Kidd and Midwest Innocent Project, these men, and so many others, are being offered a hand up during a difficult transition.

AGENCY LIST

(agencies that referred guests in 2022)

Academy of Addiction Services	KC Footprints
Avenue of Life	KC For Refugees
Bishop Sullivan Center	KC Public Schools
Brothers in Blue	Life in Full Transformation
Care Beyond the Boulevard	Lotus Care House
Catholic Charities of NE Kansas	Mattie Rhodes Center
Catholic Charities of St. Joseph	Metro Lutheran Ministry
Church of the Resurrection	Mision Alcance, Inc.
Congregational Care	Mother's Refuge
Community LINC	Neighbors Who Care
Church of the Resurrection Missions	Newhouse Shelter
Cornerstones of Care	Olathe Public Schools
Cross Lines Community Outreach	Our Spot KC
Della Lamb Community Services	Pawsperty
Empire Dreams	Rachel House Pregnancy Resource Center
Front Porch Alliance	Reconciliation Services
Healing House	ReDiscover-Lee's Summit
Heartland RADAC	ReDiscover-Midtown
Hillcrest Transitional Housing	ReDiscover-South
Hope City KC	Rediscover-Thrive
Hope House	Renewed Hearts
Housing Authority of KCMO	reStart
ISI KC	River of Refuge
Jewish Family Services	Rosebrooks Center
Jewish Vocational Service	SafeHome
Johnson County Interfaith	Salvation Army-SSVF
Hospitality Network	Serve the World Charities
Johnson County Mental Health Center	Synergy Services, Inc
Journey to New Life	Tri-County Mental Health Services
Juneteenth	University Health
Kansas City Girls Preparatory School	Veterans Administration
Kansas DCF	Veterans Community Project
KC Crime	Wyandot Center
	You Thrive

VOLUNTEERS

A team of 365 passionate volunteers - one for every day of the year - volunteered at Flourish Furniture Bank in 2022. Not only do these volunteers collect donated furniture and assist our guests through their shopping experiences, but they do so much work behind the scenes. Our dedicated community of passionate individuals is essential to every part of our process. In 2022, volunteers gave 22,726 hours of service to furnish homes. That's an average of 25 hours per home furnished!

BILL

At Flourish, one of the ways we practice sustainability is by repairing and repurposing donations for our families. Bill, one of our most dedicated champions for repurposing, makes items not only beautiful, but brings them to their utmost potential. Bill has transformed these entertainment centers into gorgeous armoires for our guests, turning an ordinary piece of furniture into a gorgeous and highly functional staple of a home.



JIM

Jim is a member of The Kansas City Woodworkers' Guild and gives his time and talents to volunteering at Flourish. Jim can also usually be found in our workshop or dropping off his latest project. In 2022, Jim began building dining room tables for our guests, using the process as a teaching tool for those in the guild to improve their skills and give back to the community.

TEAMS



WOOD



SEWING



MOVING



DOCK



DISHES



ADMIN



BEDS



PICKUP



ELECTRIC



PACKING



HOSTS



SORTING

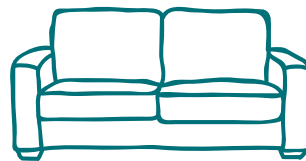
ITEMS

Thanks to our volunteers' hard work repairing and refurbishing donations, we distributed 34,797 furnishings - saving 300 tons of unwanted household items from the landfill. Our system diverted waste by turning used furniture from 250 residences and 21 corporate partners into a resource for those who need them. By coupling environmental sustainability with social service, our work is founded in a philosophy of abundance. The total value of donated items came to \$823,429 that has now been re-invested in homes throughout the community.

ITEMS REHOMED



2,055
Beds &
Frames



2,020
Upholstered
Furniture



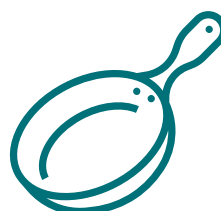
6,700
Linens



4,839
Wooden
Furniture



9,656
Miscellaneous
Items

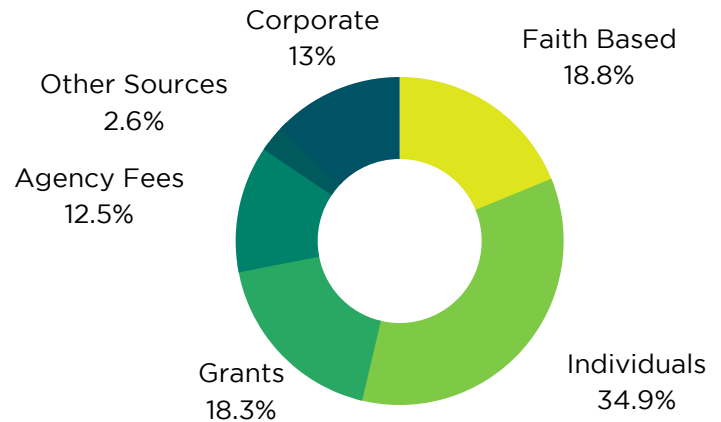


9,527
Household
Items

FINANCIALS

FOUNDATION GRANTS

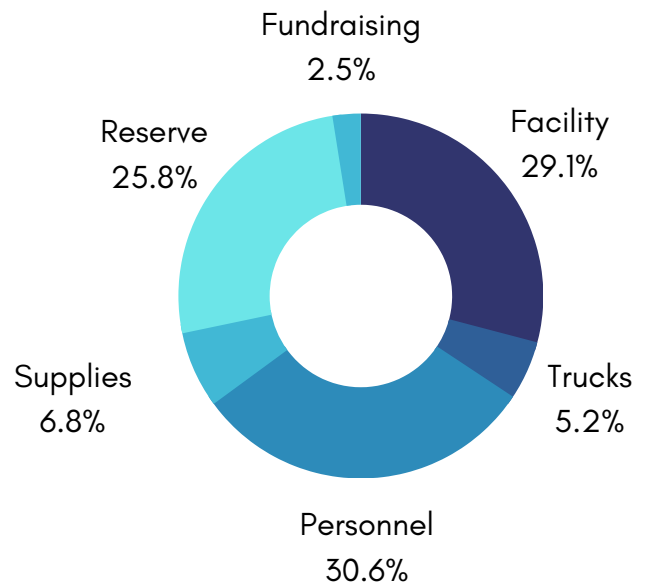
Blessings Abound
Dunn Family Foundation
Health Forward Foundation
Menorah Heritage Foundation
Nebraska Furniture Mart
Oppenstein Brothers Foundation
Soroptimist International of Kansas City
UMB Financial Corporation Charitable
Foundation
Vivian & Hymie J. Sosland Charitable
Trust



REVENUE

CORPORATE SPONSORS

Amgen Foundation Staff Giving Programs
Blue Tape Estate Sales
Blue Valley Realty
Brinkmann Constructors
Colorado Trust
CommunityAmerica
Enterprise Bank & Trust
Garmin International
John Deere
Logic Inc
Pivotal Health Care LLC
ReeceNichols Real Estate
Sherwin Williams
Summit Homes
Tommy's Car Wash



EXPENSE

STAFF & BOARD



Rich Shockey
Executive Director



Paula House
Operations Director



Amy Cox
Development Coordinator



Elinore Noyes
AmeriCorps VISTA



Allison Mannering
AmeriCorps VISTA

Steve Warta, Chair

Founder and Managing
Director
Roadmap Wealth
Management

Rich Kline, Treasurer

Managing Member
Vita Mobile Medical
Support Services

Cori Wallace

Engagement Director
Della Lamb Community
Services

Yvette Richards

Director of Community
Connection
St. James United
Methodist Church

Carol Cartmill

Senior Director of
Missions
Church of the
Resurrection

Rick Washington

Teacher
Allan Village Charter
School

Gene Lampe, Secretary

Senior Director of
Human Resources
Garmin International

Amy Rush

General Counsel
CommunityAmerica

Janine Smiley

Director of Public Relations
and Communications
CruxKC

Michael Dehner, Incoming Treasurer

Director of Finance and Accounting
CommunityAmerica Credit Union